

4200-IR Refrigerant Gas Monitor



Flexible monitoring and control for refrigerant gas leaks in machinery chiller rooms of residential, commercial and industrial buildings.

The 4200-IR offers an intelligent solution to monitor for refrigerant leaks in machinery chiller rooms. The central panel offers full user interface, control setup and relay interlocks for ventilation control and gas leak alarms. Sleek remote alarm panels for outside the room and point of source infrared sensors complete the package.

- designed to CSA B52 and ASHRAE Std 15 guidelines
- models available for up to 10 sensors
- touch screen interface
- relays for ventilation, BAS and boiler control
- ventilation and chiller override switches included

Main Panel



Remote IR-200 Sensor

Remote Alarm Panels



4200-IR

Standard Features

- wall mount Type 4 painted steel enclosures
- central panel with audio and visual alarms
- remote panels with audio and visual alarms
- touch screen with ppm concentration
- alarm acknowledge and test buttons
- fan and chiller override switches on all panels
- user defined password protection
- infrared sensor technology
- models for up to 10 sensors
- up to 5 remote panels

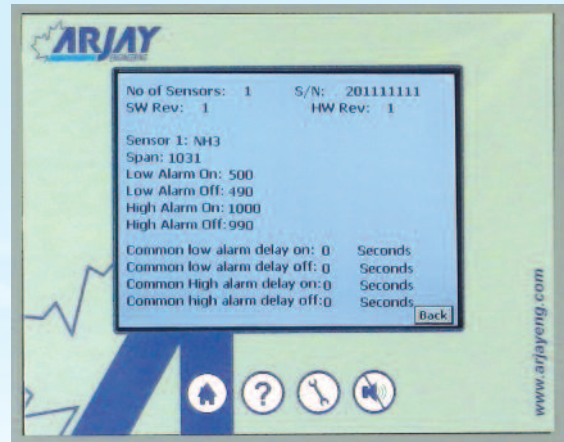
Technical Specifications - Panel

Operating Temperature	0° to 40°C, indoor use
Power Input	24 vdc, 110 vac, or 220 vac
Enclosure Rating	Type 4
Relays	DPDT, dry contacts, rated 240 vac max, (quantity based on model)
Display	touch screen, full colour

Technical Specifications - Sensor

Technology	non-dispersive infrared
Range	0-1,000 ppm

Resolution	
Typical Target Gases	R11, R22, R123, R134A, R404A, R407A, R407C, R410A, R448A, R514A, R717 (Ammonia)



Full diagnostics and setup functions

