



# 4200-IG

## Industrial Grade Gas Monitor



### Flexible gas monitoring and control in commercial and industrial facilities

The 4200-IG offers an intelligent solution for monitoring of toxic and combustible gases in ambient air. The central panel offers full user interface, control set-up and relay interlocks for ventilation control and gas leak alarms.

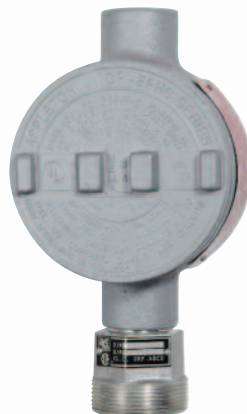
- multiple sensor inputs
- relays for ventilation, BAS and alarm interface
- analog outputs for remote control and interface
- simultaneous display of all sensor concentrations

The standard 4200-IG can accept the analog input from any of the Arjay offered sensor transmitters, or can monitor any of your own. This monitor is ideal for industrial facilities, wastewater treatment plants, utilities, and any application where a full monitor and control station is required.

for use with any style of analog sensor transmitter



**EC-Gold**  
General Purpose  
ppm toxic and % oxygen



**HLM-2000**  
HazLoc  
toxic and LEL



**IR-200A**  
General Purpose  
Refrigerants



**IR-350**  
General Purpose  
Carbon Dioxide

# 4200-IG

## Standard Features

- wall mount Type 4 painted steel enclosure
- central panel with audio and optional visual alarms
- optional remote panels with audio and visual alarms
- touch screen with gas concentration display
- user defined relay override switches
- user defined password protection
- user defined gas names and Location Title
- models for 2, 6, 10 or 18 sensor inputs

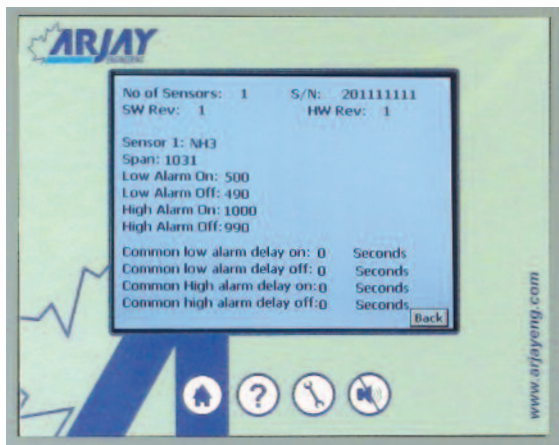
## Technical Specifications - Panel

Operating Temperature	0° to 40°C, indoor use
Power Input	24 vdc, 110 vac, or 220 vac
Enclosure Rating	Type 4
Relays	SPDT, dry rated 240 vac
Analog Output	(optional) scalable 0/4 to 20 mA non-isolated, one per sensor input
Display	touch screen, full colour on main, monochrome on remote
Certifications	CSA and UL Electrical Safety

## Technical Specifications - Sensor

Refer to the specific sensor transmitter required. This panel can monitor :

- ppm toxic inputs from the EC-Gold and HLM-2000-TX transmitters
- % oxygen inputs from the EC-Gold and HLM-2000-TX transmitters
- % LEL combustible inputs from the HLM-2000-EX transmitter
- ppm refrigerant inputs from the IR-200 transmitter
- ppm carbon dioxide from the IR-350 transmitter
- user supplied 4-20 mA input from any sensor type



**Full diagnostics and setup functions**

